

DROMONTTM
Dispensing Knowledge

PERFECTA

The Ultimate
Tinting Machine

MAINTENANCE-FREE
PATENTED SYSTEM

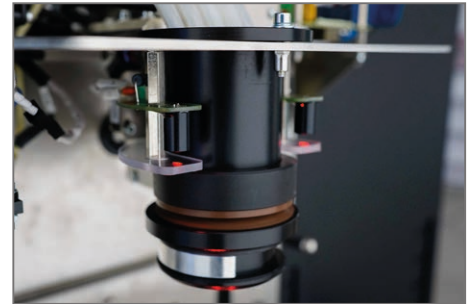


TINTING MACHINE

SPECIAL MAINTENANCE-FREE BENEFITS

AIR-TIGHT AUTOCAP - Dromont Patent

- Uniform effective sealing for maximized protection and minimized drying of the nozzles
- Precise two-phase cinematic (translation-rotation) with single linear actuator
- Wide sealing contact area for install-friendly positioning tolerance (6 mm coaxial tolerance)
- Flexible lip sealing principle allowing high tolerance for angular misalignments and upper end-stroke engagement point
- Coaxial soft engagement of dosing head from underneath, no side impact
- 2-fingers easy-in/easy-out cap snap-clamp support



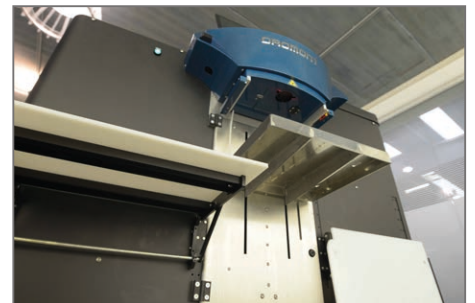
SELF-HUMIDIFICATION SYSTEM - Dromont Patent

- Self-production of distilled water by controlled condensation from the atmosphere for fully automated self-humidification feature
- Completely automated fully programmable procedure for customized “Set & Forget” use
- Automated self-refilling of the cap controlled by min/max level sensors
- Refill liquid reservoir tank for immediate always-ready cap humidification with min/max level sensors for system control status
- Lateral hose for reservoir tank manual refilling in cases where water can't be used for humidification



FOLDABLE LATERAL SHELVES

- Side shelves 90° tiltable downwards for ergonomic refilling procedure, also when the machine is not laterally accessible in the point of sale
- Safe ergonomic two-hands-one-push tilting mechanism



SPECIAL MAINTENANCE-FREE BENEFITS

CANISTER LEVEL CONTROL (option) - Dromont Patent

- Colorants level detection by contactless magnetic sensing between external adhesive sensor stripes and free internal magnetic float
- Sensor engagement allowed by stirrer rotation
- (1 impulse per turn), achieving an encoder-like accessory effect on the stirrer motors: automatic detection of a faulty motor
- Selective stirring feature included in the sensing electronics



REVISED REVERSED PUMPING GROUP

- Simplified direct colorant path for stable performance allowing minimum dispense of 1/768th fl.oz. (0,038 cc)
- “Burst-Proof” piping design
- 37% wider 3-way valve internal opening
- Increased flow of 300% for small quantities up to 100ml per single colorant (flow rate of 1,5L/min) and 25% for quantities over 100ml per single colorant (flow rate of 0,6L/min)
- Reduced piping for easy maintenance



TOP-FRONT TILTABLE ELECTRICAL CABINET

- Top-front electrical cabinet position for immediate access and easy maintenance without moving the machine
- Tiltable cabinet with support rod for easy internal inspection on the top of the pumping group (pumping group motor, 3-way valves, splitter, valve-head piping)
- Bottom hatch under the cabinet for easy access to the motor driver and power-supply
- Forced ventilation and air vents for proper heat flow and optimized thermal field



CONFIGURATIONS

PERFECTA THE 1

812 (944*) x 987 x 1165 (1660*) mm
(16 = 12x3L + 4x5L)

PERFECTA THE 3

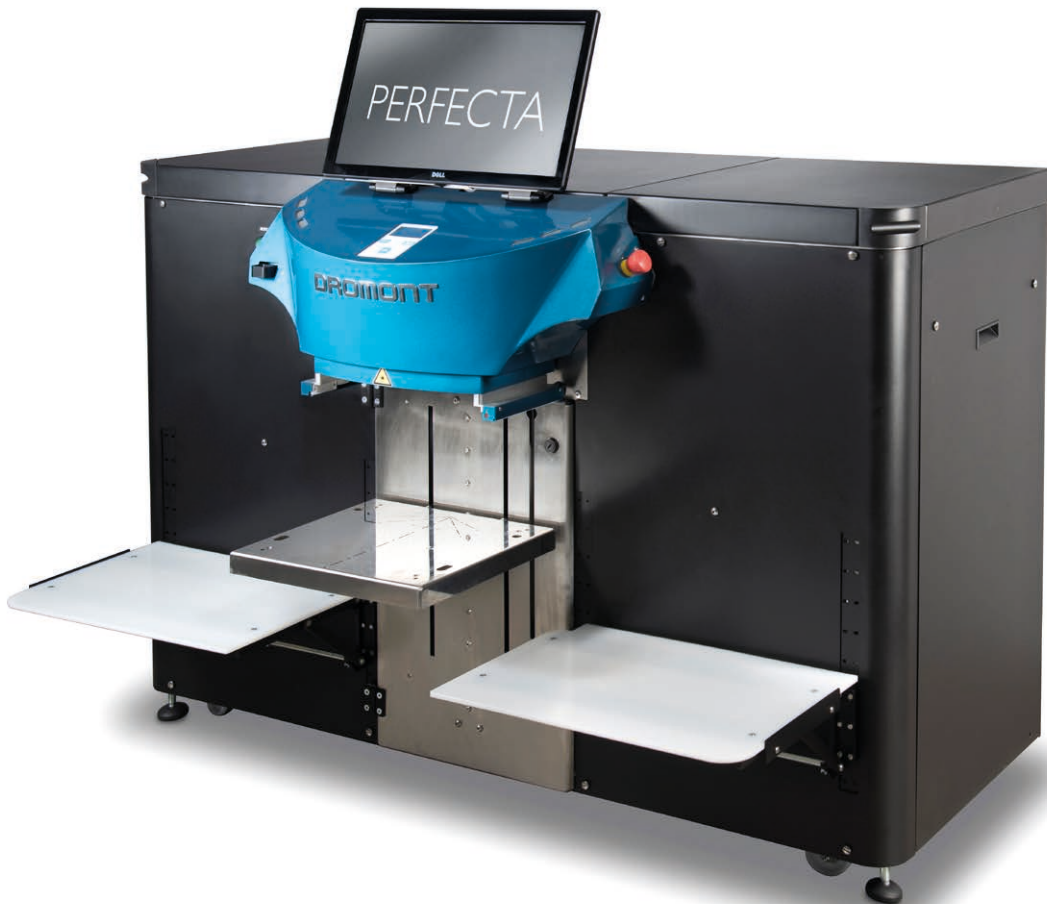
1285x 987 x 1165 (1405*) mm
(16 = 12x6L + 4x10L)
(24 = 18x3L + 6x6L)

PERFECTA THE 5

1740 x 987 x 1165 (1405*) mm
(24 = 18x6L + 6x10L)

PERFECTA THE 7

2168 x 987 x 1165 (1405*) mm
(24 = 4x25 + 4x15 + 16x6)
(32 = 24x6L + 8x10L)



(*) Dimensions including PC screen and its support.

PERFECTA

The Ultimate MAINTENANCE-FREE Tinting Machine

TECHNICAL CHARACTERISTICS

- **Flow rate** (per circuit): 0.6 Lt./min (*) – 21oz./min
Up to 100ml (4oz.) dispense → flow rate of 1.5L/min per colorant
Over 100ml (4oz.) dispense → flow rate of 0,6L/min per colorant
- **Accuracy: 1/768th fl.oz.** (0,038cc) variable depending on rheology of the products
- **Top front electrical cabinet** position for immediate access and easy maintenance
- **Air-tight “Patented” Automatic cap** that guarantee an hermetic closure of the dosing head and prevents colorants drying out – no more daily purge but once a week
- **“Patented” Self-humidification system** (as optional) that eliminate daily maintenance operation and guarantee an independent humidification of the cap even in dry environment. Self-humidification system (as optional): Thanks to the patented Self-humidification system, the machine self-maintains an optimal humidification level of the cap. No need of ordinary maintenance (dosing head cleaning, sponge humidification or replacement)
- **Automatic “Patented” Colorant Level Sensors** (as optional) allow to visualize the true level of each colorant, avoid empty canisters and eliminates the possibility of declaring incorrect quantities
- Standard configuration: 16 -24 -32 canisters
- Stainless steel **piston pumps** (easy to be replaced by non-expert operator)
- **Simultaneous dispensing:** all the colorants dispensed at the same time
- Canisters made of POM polymer material (***) - Stainless steel available as optional
- Each canister has an **independent** motorized **agitator** for product homogenization. Extend Colorant Life and Quality: You can program the best agitation frequency per each canister and visualize that each agitator is working properly. Selective stirring is possible in each canister (if Level Sensors option is selected).
- Metal painted charcoal grey color external panels (special colors as optional)
- Dispensing head max diameter: 54,5 mm
- **Recirculation** of the colorants avoid sedimentation and air entrapment
- **Automatic central shelf**, with safety photocell for automatic detection of cans
- **Lateral foldable plate shelves treated in ertalyte** to easily handle sample pot and buckets
- **Volumetric and gravimetric** dispensing

(*) depending on colorant rheology

(**) please verify compatibility with POM material and your colorants